

T Rex Vs Spinosaurus

Let's take a look at two of the largest carnivores ever to walk on Earth. We examine both the similarities and differences between the mighty Tyrannosaurus Rex and the Spinosaurus here



TYRANNOSAURS REX



SPINOSAURUS

Teeth

T Rex has serrated teeth good for cutting that could be up to 12 inches long when including the root.



Cone shaped teeth that were better for grabbing fish to holding them. hey could be also 12ches long including the root.

Bite Force

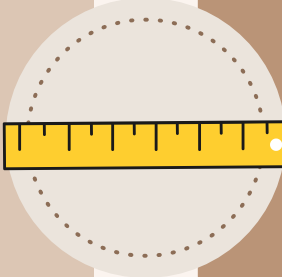
On land there was no ore power ful bite than that of a T Rex! It could bite with the force of 12000 lbs.



Spinosaurus had a powerful bite, though not as powerful as T Rex. it could bit with about 4300 lbs.

Length

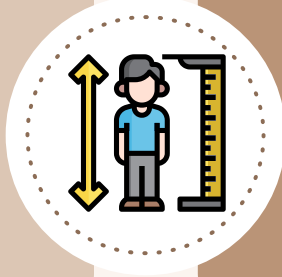
T Rex was one of the longest of all carnivores and could grow to 43 feet long.



Spinosaurus is thought to be the longest of all the carnivore dinosaurs at 49 and (possibly) 53 feet long

Height

T Rex was also a tall dinosaur, and to the top of its head is thought to be from 12-14 feet when fully grown.



Spinosaurus was likely a little taller than Tyrannosaurus Rex, up to 13-15 feet. However with the sail on its back it is thought to be up to 18 feet

Weight

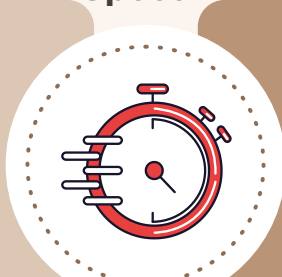
T Rex was a big heavy dinosaur and could weight up to 16 - 20,000 lbs when an adult.



Although Spinosaurus was certainly big, tall and heavy, it is currently thought to be less massive than a T Rex at 15,000 Lbs.

Speed

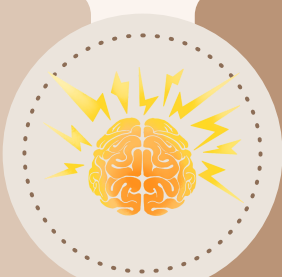
T-Rex was not going to win any races with a top speed of about 12 miles an hour. It is thought any faster and it could hurt its legs.



Spinosaurus was not a particularly fast dinosaur and is thought a top speed of 15 mph would be its maximum.

Brain Size

T Rex is thought to be quite smart (for a dinosaur) and certainly smarter than the spinosaurus.



Although not quite as small brained as a stegosaurus, Spinosaurus was not a very smart dinosaur.

Arms

Although the arms were small compared to the rest of its body they were actually quite strong.



Two long arms with claws on the end to help it grab and kill its prey